



RAMPUP INSTALLATION GUIDE

Product is to be installed when air temperature is between 55 and 90 degrees.

SURFACE MUST BE COMPLETELY DRY, DIRT AND DEBRIS FREE; INCLUDING ALL CURING COMPOUNDS. This can be achieved using general construction methods (i.e. power wash, mechanical abrasion, etc...). This applies to both concrete and asphalt surfaces. Do not install if rain has occurred within 24 hours prior to installation, or if rain is expected within 24 hours. Ensure irrigation systems in close proximity are disabled for at least 24 hours prior to and after installation of mats. Do not apply to surfaces that are deteriorating or in poor condition. In such conditions, a concrete or asphalt patch should be applied to achieve a smooth surface to receive mat.

Maintain a safe working area. Keep barricades or protection assembled around installation areas for the protection of the public and it's property until system has dried enough for light foot traffic.



1) Layout RampUp mats according to ADA specs. Install tape 1/4" larger than mat at all perimeters.

Install SSTD-589 adhesive bond coat on surface using a 1/8" notch trowel. Keep joints free of adhesive.



2) Once SSTD-589 bond coat has been troweled, back roll bond coat over surface to insure even displacement of product using 1/2" nap roller.



3) Install Fitted RampUp mat in wet adhesive SSTD 589 base coat adhesive. Walk on entire mat surface.



4) Use a stiff bristle push broom to ensure positive bond.

****NOTE:** Mat can be installed over saw cut joints, but these joints should be patched or filled with cement based compound prior to installation. Concrete expansion joints must be honored and not covered. Cut mat at expansion joints to accommodate.**



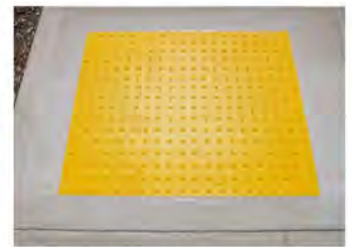
5) Starting from the center of the mat work your hands through the rows pushing any trapped air to the edge of the mat. Wearing a pair of gloves during this process will protect your fingertips.



6) Using SSTD-589 adhesive bond coat, brush all edges in an upward manner to ensure all edges are encapsulated to form a beveled edge and a watertight seal.



7) Pull tape away from mat after completely floating one side of SSTD Ramp Up Mat.



Finished Product

REQUIRED TOOLS



1/8" "V" Notch Trowel



Utility Shears



2" Masking Tape



Paint Brush



3" Chip Brush



Wire Brush



Stiff Bristle Push Broom